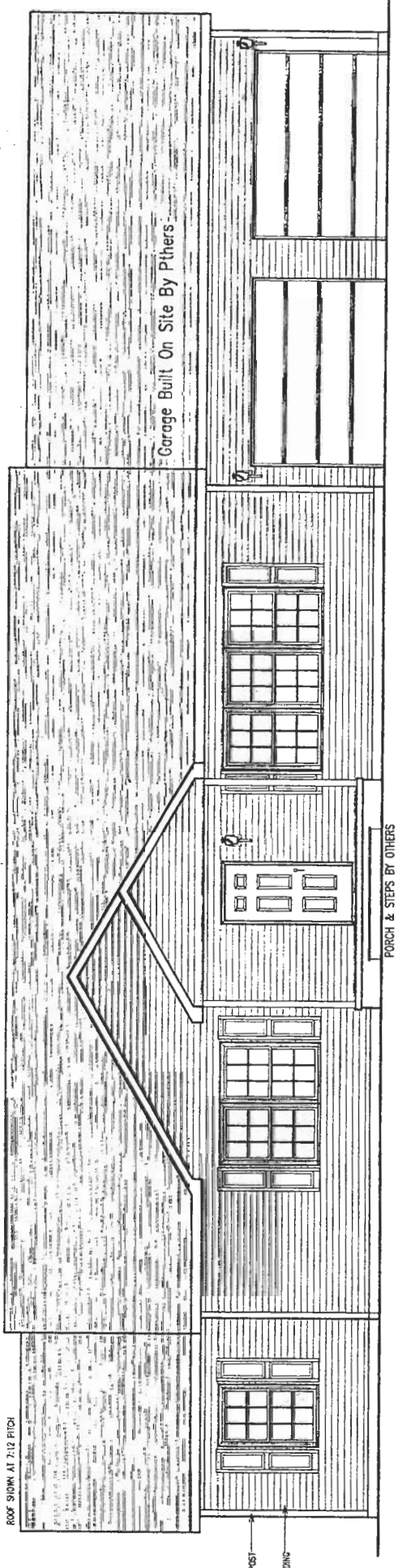


Architectural rendering of a two-story house with a red roof, white siding, and red accents. The house features a prominent red-tiled gabled roof with white decorative brackets under the eaves. The exterior walls are finished with light-colored horizontal siding. On the left side, there is a large white door with a grid of small square panes. In the center, a red door is set within a small arched porch, flanked by a red window with a semi-circular transom above it. To the right, another red door is positioned next to a red window with a decorative pediment above it. The house is surrounded by lush green trees and a vibrant yellow lawn. A decorative border of red flowers runs along the base of the house.



ROOF SHOWN AT 7:12 PITCH

Garage Built On Site By Pthers

PORCH & STEPS BY OTHERS

POST

SINGS

REVISION	DATE	BY
x		SR
x		SR
x	04-14-08	SR
x	11-14-07	SR

32X54 AUGUSTA

FRONT ELEVATION

SCALE: 3/16" = 1'-0"

DATE: 11-13-07

REVISIONS: X

Prelim. Dwg.s by: SER

Prod. Dwg.s by: J.P.

STRUCTURAL MODULARS INC.

P.O. BOX 315 Strettonville, PA. 16258 (814) 764-5555

QUOTE: Q2395

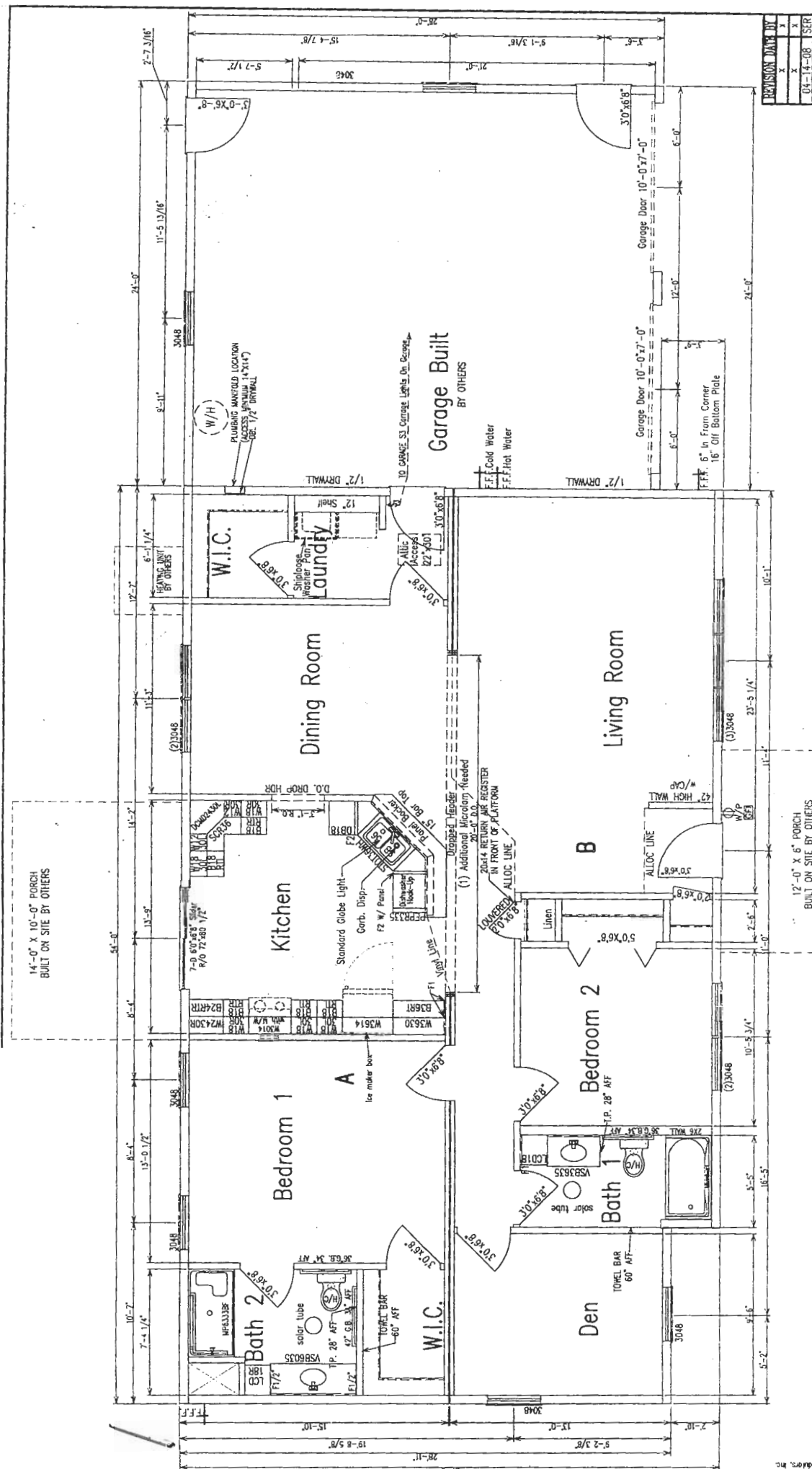
BUILDER: Thompson Hill

DEL. LOC. PA

CUSTOMER: Chris The King

SN081382

Note: These drawings have been extracted from an approved building system or have individual model approvals



REVISION DATA BY	
X	X
X	X
04-14-08	SER
11-14-07	TSER

32X54 AUGUSTA
FLOOR PLAN
 SCALE: 3/16" = 1'-0"
 DATE: 11-13-07
 Prelim. Dwg.s by: SER
 Prod. Dwg.s by: J.P.

QUOTE: Q2395
 BUILDER: Thompson Hill
 DEL. LOC: PA
 CUSTOMER: Chris The King
 P.O. BOX 315 Strattonville, PA 16258 (814) 764-5555

NOTE: These drawings have been extracted from an approved building system or have individual model approvals

Seven-D Window Rough Openings	Single Unit	Double Units
24210 - 30"x37" 1/2"	(2) 24210-60	1/2"x37" 1/2"
30210 - 35"x37" 1/2"	(2) 30210-76	1/2"x37" 1/2"
30210 - 35"x37" 1/2"	(2) 30210-76	1/2"x37" 1/2"
30210 - 35"x37" 1/2"	(2) 30210-76	1/2"x37" 1/2"
30210 - 35"x37" 1/2"	(2) 30210-76	1/2"x37" 1/2"